

Importer

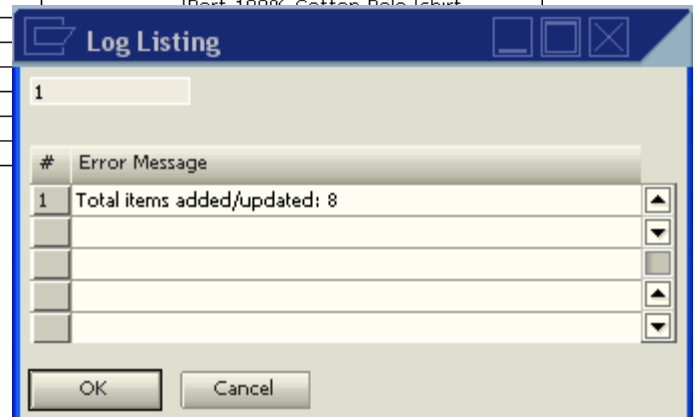
The Importer extension integrates SAP and Microsoft Excel by allowing you to bring in parts and items into the SAP database from a Microsoft Excel file. Excel files are custom and can support many things such as warehouse codes, pricing and upcharge data, part/item descriptions, etc.

Below is sample Microsoft Excel file to use for Importer

1	A	B	C	D	E				
2	Delete	Itemcode	Base item #	mfg catalog no	color code	size code	size grid code	item description	item group
3	(y/n)	(only need if	ex: k424		ex: bk	ex: m	ex: s-6x		ex: shirts
4		base or color					for explosion		(not: 100)
5		or size is null).							
6		(ex: k420-bk-s)							
7		(ex: design1)							
8									
9	n		K424	K424	BK	S		Port 100% Cotton Polo!	shirt
10	n		K424	K424	BK	M		Port 100% Cotton Polo	shirt
11	n		K424	K424	BK	L			
12	n		K424	K424	GL	S			
13	n		K424	K424	GL	M			
14	n								
15	n	design1							
16	n	design2							

If the part or item already exists in the database, then the Importer Extension automatically updates the appropriate fields.

After importing, the Log Listing screen confirms whether the items were added successfully or if there were any errors



Additional Features:

- Can explode size and color data into SAP
- Automatically creates part/item numbers for all combinations of sizes and colors

